

ANR Monthly Customer Update

MAY 2022

MAY 18, 2022



Agenda



- 1. Safety moment and TC Energy update**
DeAnna Parsell, Noms & Scheduling
- 2. Storage update**
Eric Tawney, Operations Planning
- 3. Operational update**
Kevin Pham, Operations Planning
- 4. Noms & scheduling update**
DeAnna Parsell, Noms & Scheduling

Safety moment

Bicycle safety tips:

- Wear a bike helmet that fits correctly
- Be visible
- Make sure tires, brakes and chains are functioning properly
- Ride on the right of road in the same direction of traffic
- When passing a pedestrian or another bike shout to let them know
- Stay alert, look and listen
- Watch for hazards
- Use hand signals
- Obey the rules of the road

May is National Bike Month



We transport renewable natural gas made from organic waste

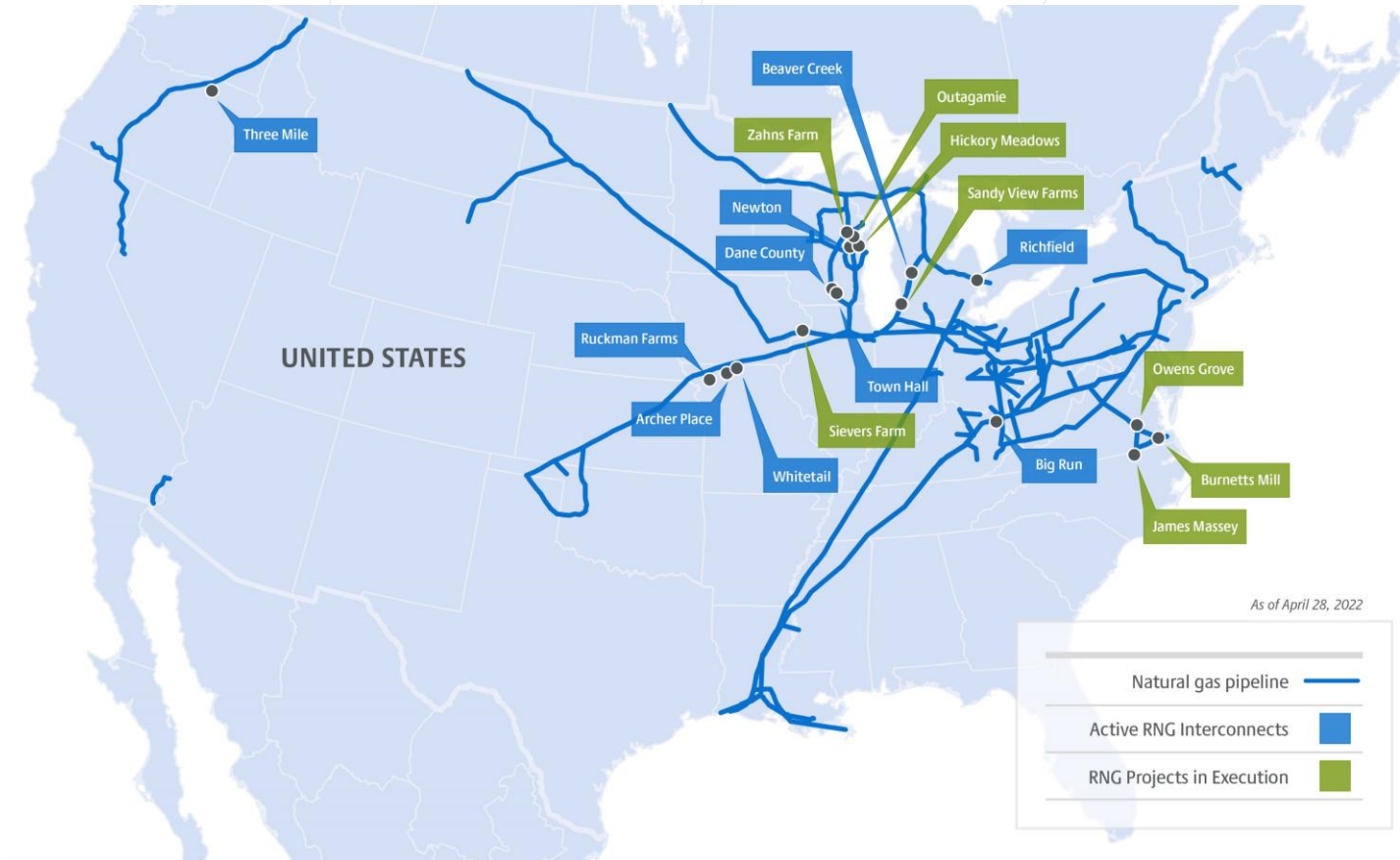
“We have embraced the growing role of RNG in our industry and continue to explore ways to optimize our existing U.S. Natural Gas pipeline system in a collaborative, safe and sustainable manner.”

Stanley G. Chapman III

*Executive Vice President and President,
U.S. & Mexico Natural Gas*

Learn more:

[TCEnergy.com/ExploreEnergy](https://www.tceenergy.com/ExploreEnergy)



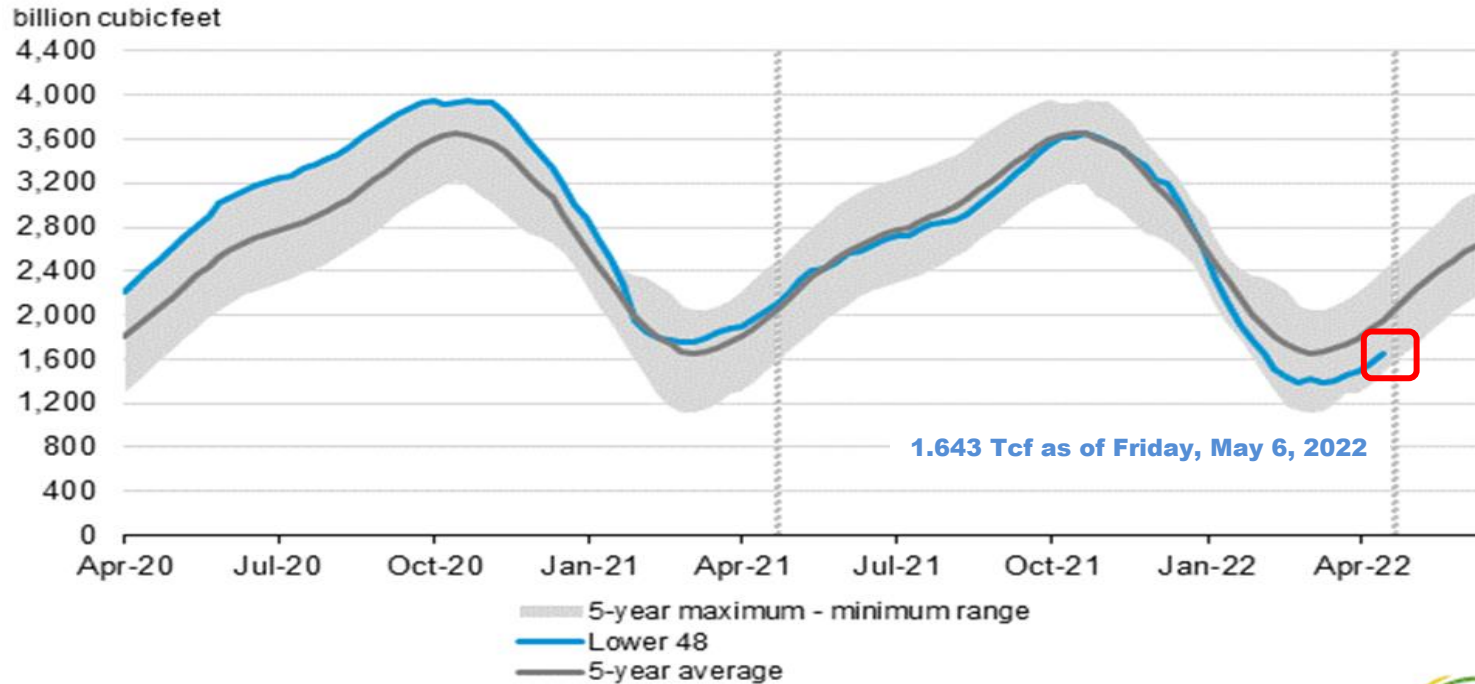
Storage update

Eric Tawney – Operations Planning

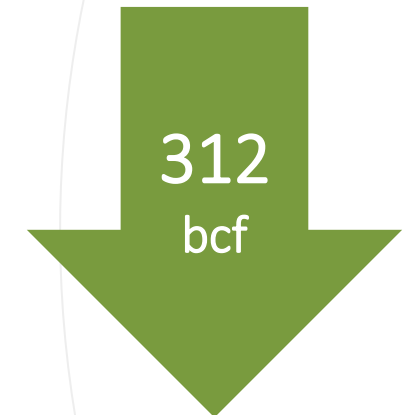
EIA storage position: The big picture

Working gas in underground storage compared with the five-year maximum and minimum

Working gas in underground storage compared with the 5-year maximum and minimum

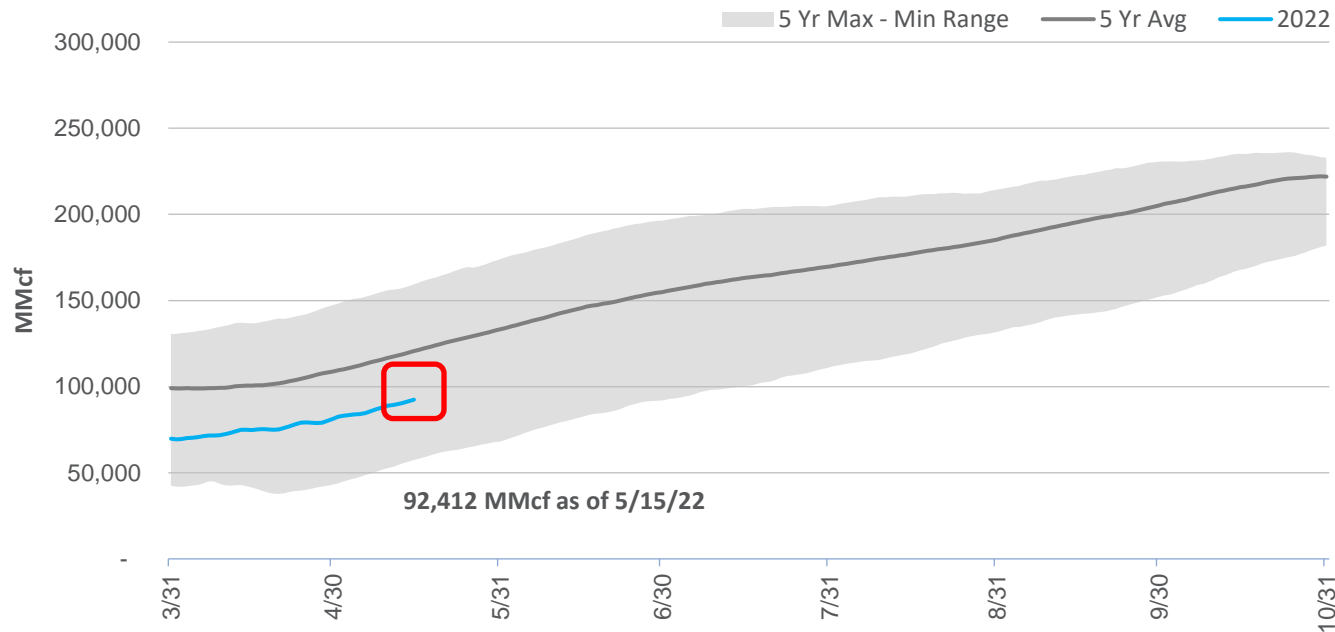


Source: U.S. Energy Information Administration



Storage position

Working gas in underground storage compared with the five-year maximum and minimum



36 bcf

less than May 2021

22 bcf

below the five-year average



Storage operations

- From Tuesday, April 19 – Sunday, May 15, storage activity averaged an injection rate of 641-MMcf/d. Daily activity varied from an injection rate of 1.2-Bcf/d down to a maximum withdrawal rate of 239-MMcf/d.
- Storage capacity is 37 percent full.
- ANR has met all firm customer demand for storage activity.
- There are currently no postings restricting storage activity and no planned restrictions on DDS capacity.

Storage operations

- Storage activity is primarily on injection, but withdrawals are still possible under certain conditions.
- ANR has completed its spring storage field shut-ins to set the fields up for injection. ANR will ensure sufficient injection capacity is maintained to meet firm injection demand.
 - When needed, sufficient withdrawal capacity will be available to meet anticipated demand
- The available capacity will continue to be reflected on the EBB under the operationally available capacity

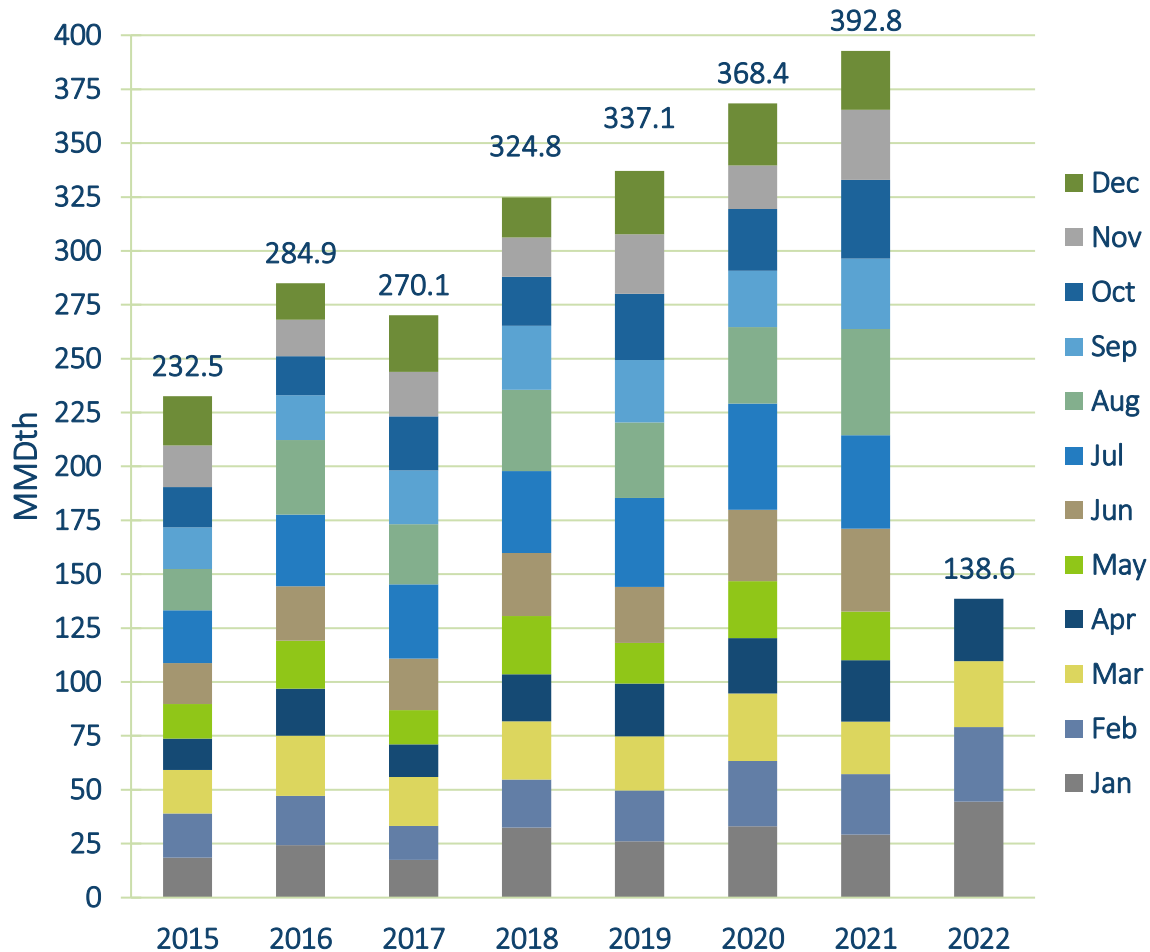


Operational update

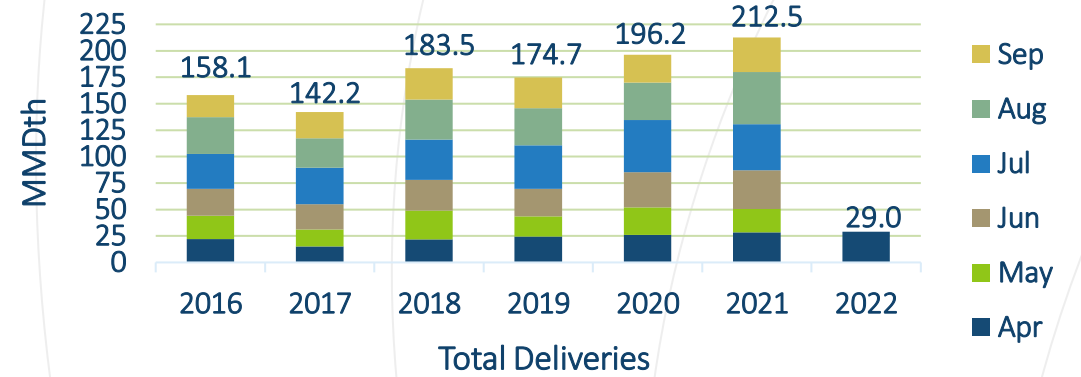
Kevin Pham – Operations Planning

Monthly Power Plants Deliveries

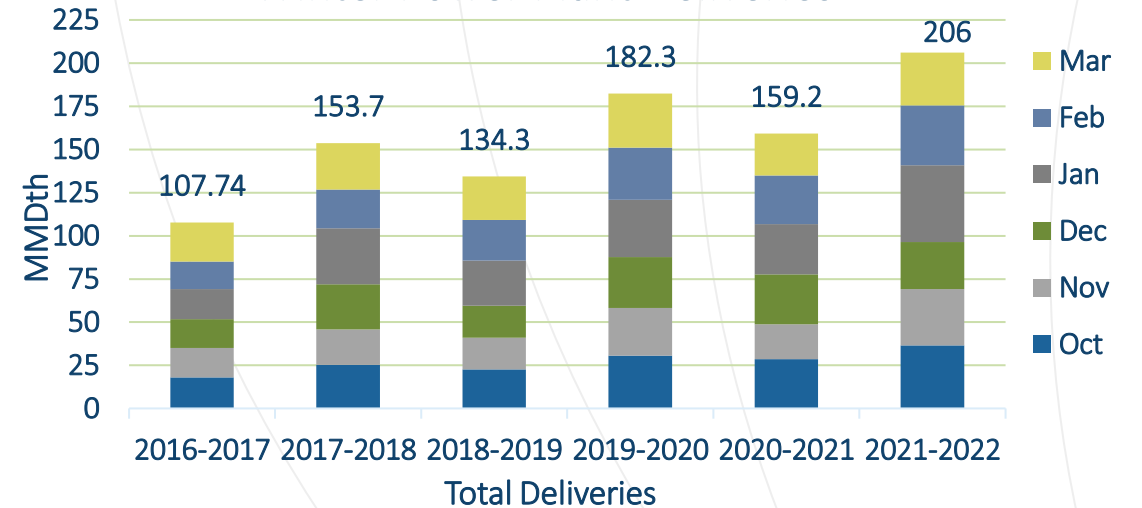
Total Monthly Power Plant Deliveries



Summer Power Plant Deliveries



Winter Power Plant Deliveries



Capacity impacts (SW Mainline & Area)

		Cap (MMcf/d)		May														June																												
Dates	Area/Segment/Location	Impact	Avail																																											
Southwest Area & Mainline				19	20	21	22	23	24	25	26	27	28	29	30	31	1	2	3	4	5	6	7	8	9	10	11	12	13	14	15	16	17	18	19	20	21	22	23	24	25	26	27	28	29	30
Southwest Mainline Northbound (LOC #226630)																																														
5/20 - 6/20	Greensburg CS - Automation Upgrade	180	511																																											
6/6 - 6/10	0-100 Line Enterprise to Maitland ILI	190	500																																											
6/14 - 6/20	Integrity Digs	70	620																																											
6/15 - 6/16	Enterprise CS - ESD System Inspection & Integrity Digs	100	590																																											
Greensburg/NNG Del (LOC #34887)																																														
5/20 - 6/20	Greensburg CS - Automation Upgrade	N/A	Shut In																																											
Greensburg/NNG Rec (LOC #90017)																																														
5/20 - 6/20	Greensburg CS - Automation Upgrade	N/A	Shut In																																											



Outage postings

- Service impacts are estimates. Actual nominations, markets, weather and pipeline conditions determine any level of curtailments.
- Projects may be added, altered, delayed or cancelled. Emergent work cannot be planned and will happen from time to time.
- Notice of such planned work, including additions or changes, will be provided via a posting under the Planned Service Outage (PSO) category in GEMS. Emergent work will be posted under the Critical Notice category as soon as possible.



Nominations & Scheduling update

DeAnna Parsell – Noms & Scheduling

Extreme condition situation notices – phased philosophy

During peak summer periods, ANR can declare an extreme condition situation when:

- Any portion of ANR's system throughput approaches capacity
- Extreme weather conditions exist
- ANR experiences operating pressures that can be significantly greater or less than normal operations, such that ANR's ability to receive or deliver quantities of gas to meet service obligations is impaired

These phases are generally applied and are subject to change based on operating conditions in order to ensure system integrity.

Extreme Conditions overview: Phase 1 – 3

Phase 1: Post a weather advisory indicating warm weather is forecasted and shippers should align receipts and deliveries daily and hourly to minimize imbalances to support system integrity.

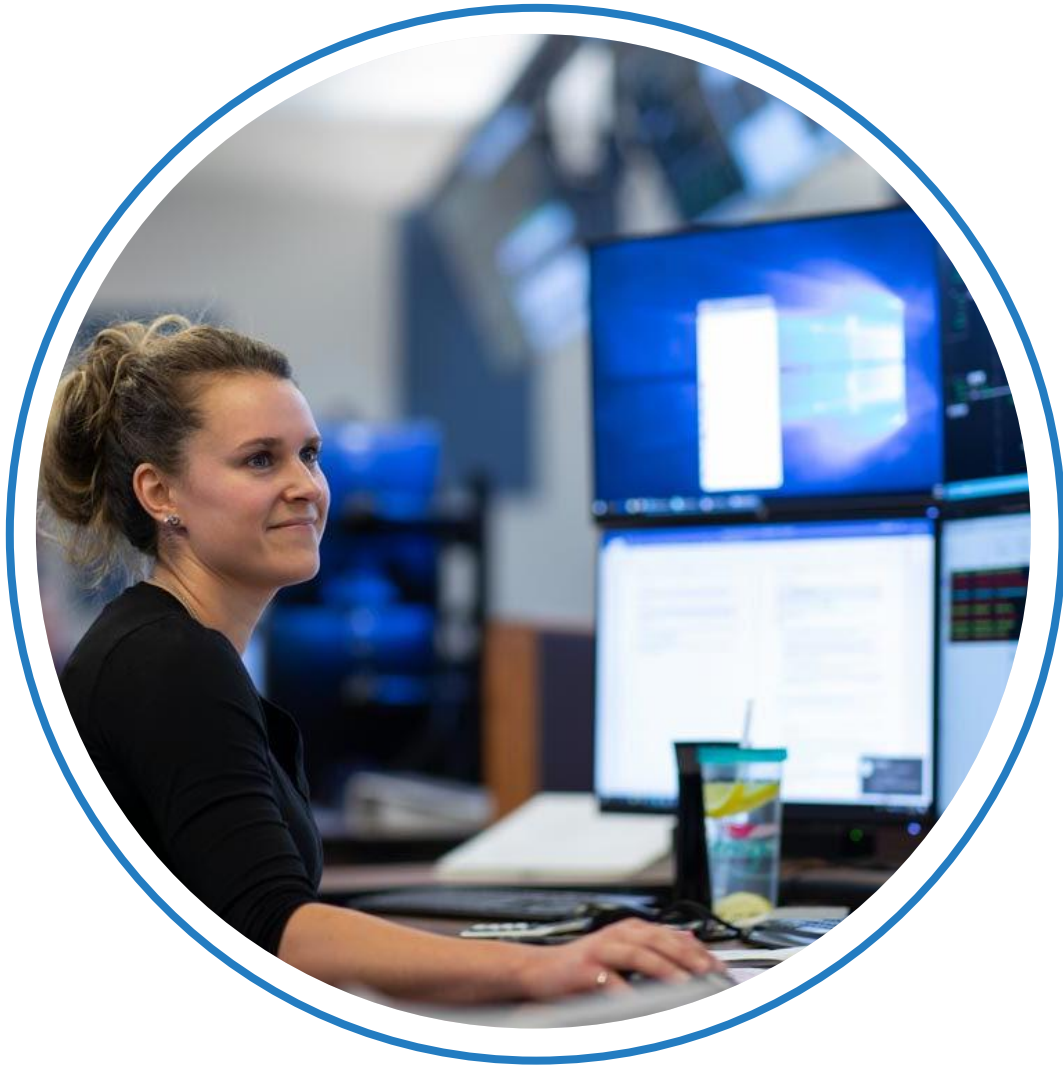
- Guidance for notice is forecast for Chicago and/or Madison & Milwaukee, Wisc., and/or Detroit where high temperatures are more than 78° F for two or more consecutive days or other operational conditions exist.

Phase 2: Post Declaration of Extreme Condition Situation indicating the area(s) of ANR's system that are impacted and lowering the Swing Percentage from 10% to 5%. All receipt and delivery services, excluding ETS and FTS-3 services, to be at a uniform hourly flow rate over a twenty-four (24) hour period. ETS and FTS-3 shippers are required to be at their contractually agreed upon hourly rate. Requests for interruptible and overrun services including ANR's hourly ITS-3 service will be evaluated on a case-by-case basis.

- Guidance for notice is forecast for Chicago and/or Madison & Milwaukee, Wisc., and/or Detroit where average temperatures are more than 84° F for two or more consecutive days or other operational conditions exist.

Phase 3: Issuance of an OFO (Operational Flow Order) may be applied at a *single location*, area, or the whole system.

- Guidance for an OFO notice is System Integrity Requirements or Determination of Unacceptable Shipper(s) behavior.



Power desk contact

LAUREN GINDRATT

Work: 832-320-6978

Cell: 713-552-3623

Email: Lauren_Gindratt@tcenergy.com

ICE: lgindratt

ANR customer assistance

Please contact the ANR Noms & Scheduling team for customer assistance, including:

- Scheduling priorities
- Firm service rights and features
- GEMS new user training
- Virtual and face-to-face meetings



TOLL FREE

1-800-827-5267



GROUP EMAIL

ANR_Noms_Scheduling@tcenergy.com



WEBSITE FOR THE ANRPL
TARIFF

ebb.anrpl.com

